



For Lease

684 Walsh Avenue,
Santa Clara, CA

±5,041 SF Building

- ±1,400 SF Office (Can Remove Portion)
- Corner Unit
- 100 Amps, 277/880 Volts
- Grade Level Door
- ±20' Clear Height
- Sprinklered
- Call to Show
- Asking \$1.55 IG ±\$.14 CAM
- ±480 SF Bonus Mezzanine Storage
- ±3k SF Yard @ \$1,500 Mo

A PROJECT OF **PELIO & ASSOCIATES**

Dave Evans

Colliers
+1 408 282 3825
david.evans@colliers.com
CA Lic. 00764837

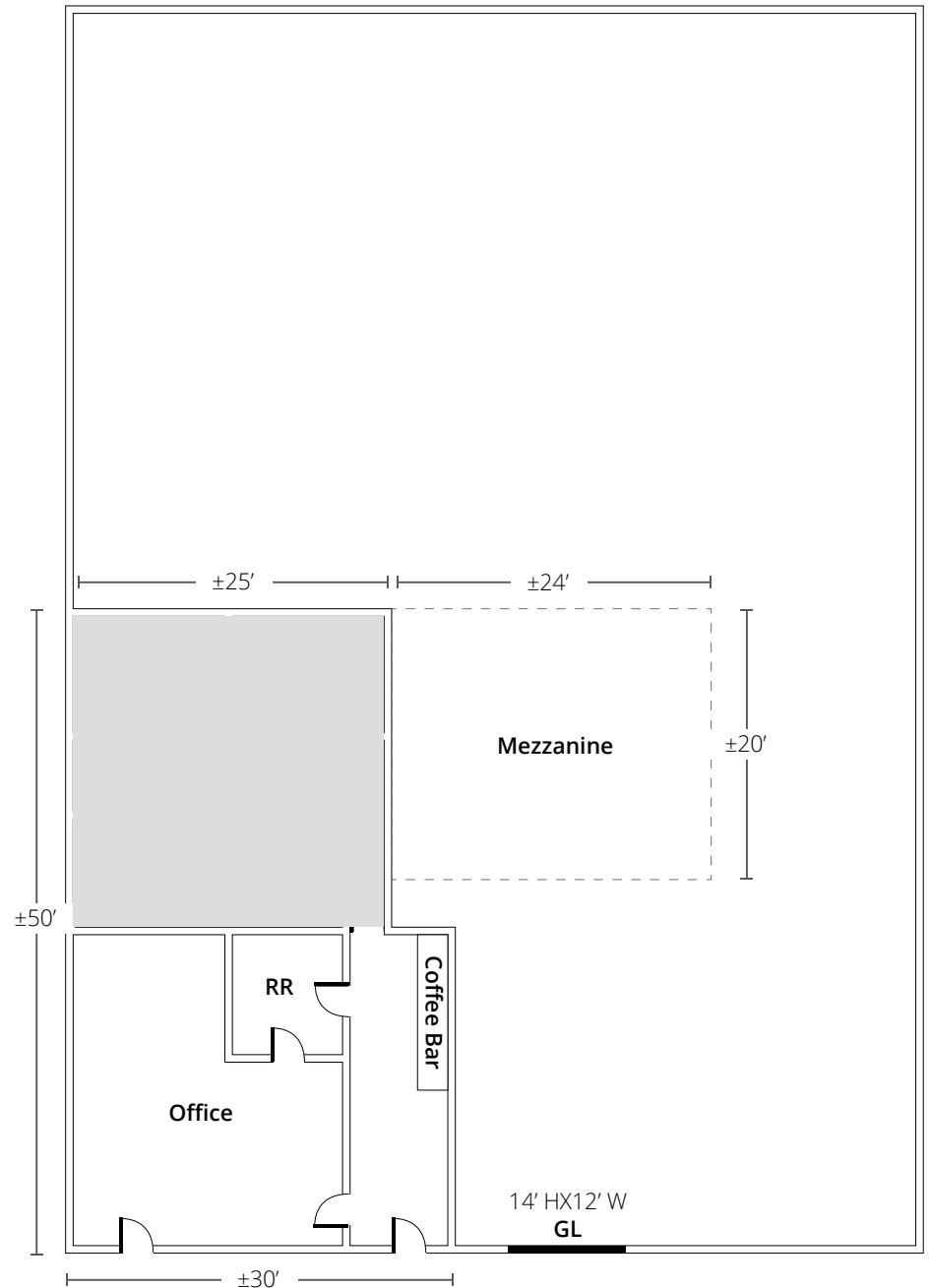
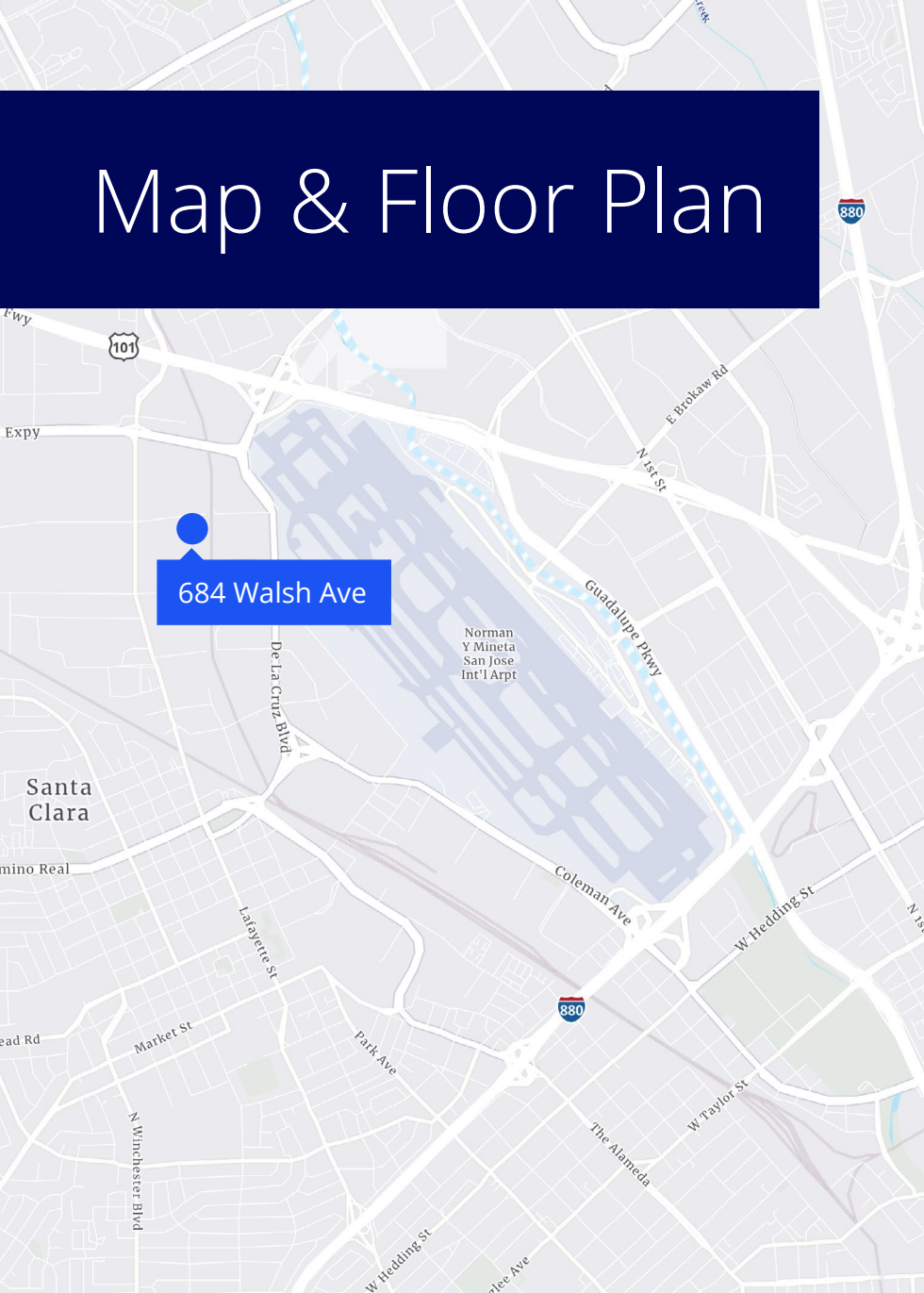
Steve Zamudio, ccim

Kidder Mathews
+1 408 888 7529
steve.zamudio@kidder.com
CA Lic. 00905956



225 W Santa Clara St
10th Floor, Suite 1000
San Jose, CA 95113
P: +1 408 282 3800
F: +1 408 282 3855
colliers.com/siliconvalley

Map & Floor Plan



Note: Drawing not exact to scale.

Corner Unit

This document has been prepared by Colliers International for advertising and general information only. Colliers International makes no guarantees, representations or warranties of any kind, expressed or implied, regarding the information including, but not limited to, warranties of content, accuracy and reliability. Any interested party should undertake their own inquiries as to the accuracy of the information. Colliers International excludes unequivocally all inferred or implied terms, conditions and warranties arising out of this document and excludes all liability for loss and damages arising there from. This publication is the copyrighted property of Colliers International and/or its licensor(s). ©2025. All rights reserved.